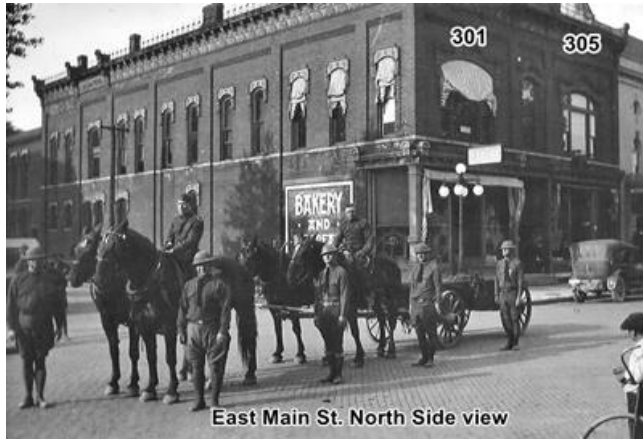


Early Ottawa Photographs



East Main St. North Side view



Ottawa milk delivery

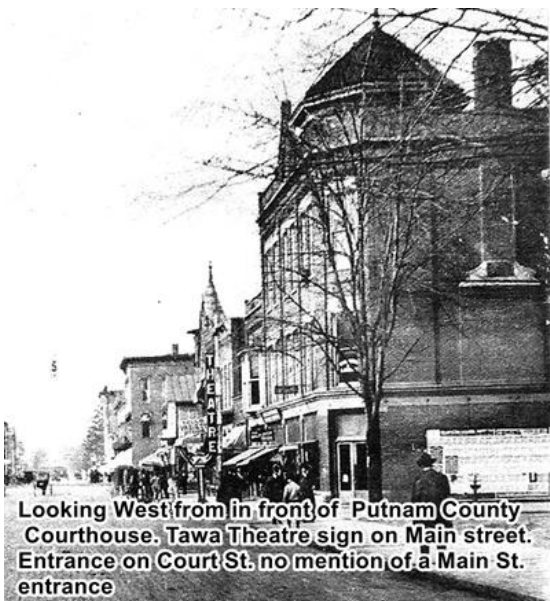
Looking West on Main St. - Original Putnam County Courthouse 1868 - 1912 front entrance is the first building on the right



End of East Main St. South Side view
102 is the end, 101 is the start of West Main St.



East Main St. South Side view



Looking West from in front of Putnam County Courthouse. Tawa Theatre sign on Main street. Entrance on Court St. no mention of a Main St. entrance



Intersection of Main St & Oak St. looking East

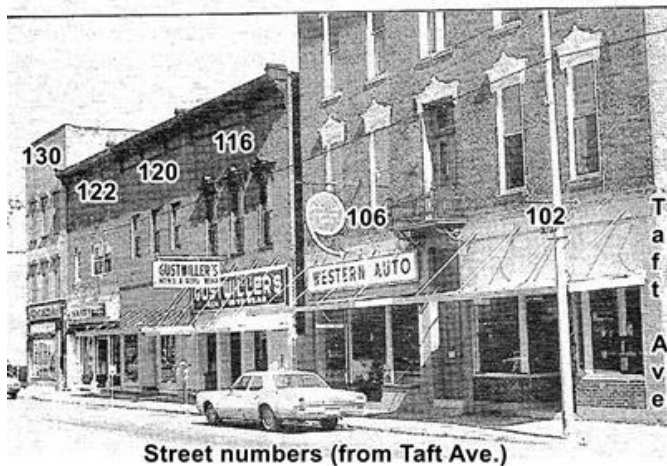
Early Ottawa Photographs continued



WW II Funeral Parade Deceased unknown



Putnam County boys leaving Ottawa to fight Germany



Street numbers (from Taft Ave.)



East Main St. South Side



Looking West on Main Street from in front of Frey's Hardware